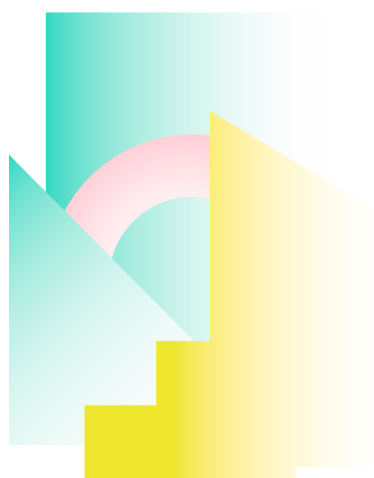
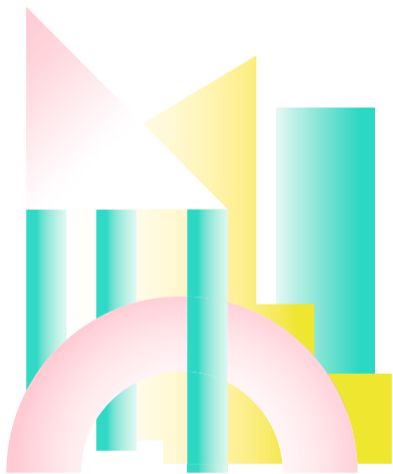
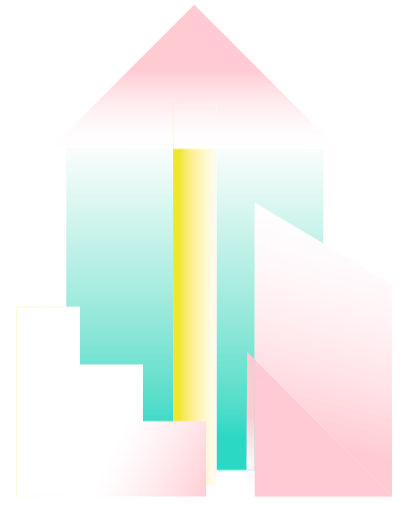
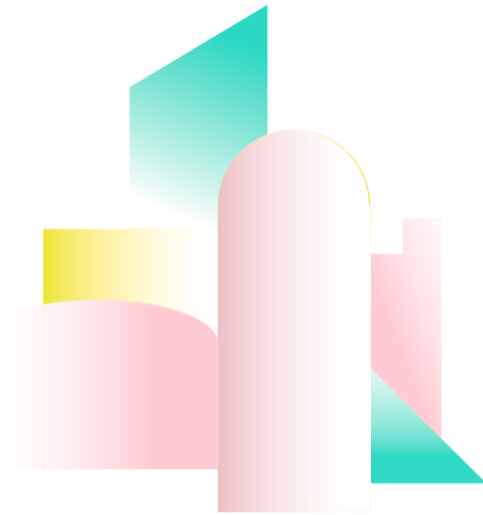
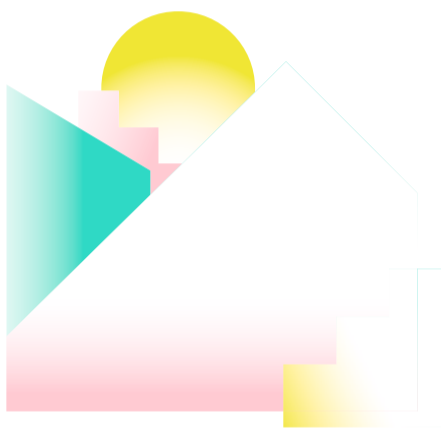


#ABelgianVillage



#ABelgianVillage

magazine store by
NOT TOO ARTY SHOP
WWW.NOTTOOARTYSHOP.COM

beer by **PALM**
PALM.BE

fashion by
BLACK BALLOON
BLACKBALLOON.BE

support by **CRAS**
CRAS.BE

light by **DELTA LIGHT**
DELTALIGHT.COM

food by **FOODSTORMS,
JUST LIKE YOUR MOM &
STUDIOMIE**

FOODSTORMS.BE, JUSTLIKEYOURMOM.COM &
STUDIOMIE.BE
MAKE YOUR RESERVATION:
abelgianvillage.be

drinks by
DISTILLERIE DE BIERCÉE
DISTILLERIEDEBIERCEE.BE

bikes by **MINERVA**
MINERVA.BE

WITH THE CONCEPT OF A BELGIAN VILLAGE, CREATIVE AGENCY DIFT GIVES LABELS AND DESIGNERS THE OPPORTUNITY TO SHOW THEIR PRODUCTS IN A SETTING THAT IS VERY DIFFERENT FROM THE EVERYDAY FAIR ENVIRONMENT (AND EVEN FROM MANY CITY CONCEPTS DURING IL SALONE). A BELGIAN VILLAGE IS DEVELOPED BASED ON THE SETTING OF THE COSINESS OF A BELGIAN VILLAGE, IN PARTICULAR OF OUR TYPICAL 'ANNEXES' CULTURE, IN WHICH WE CONTINUE TO BUILD NEW ANNEXES TO AN EXISTING HOUSE. DURING IL SALONE DEL MOBILE, WE BUILD AN EXHIBITION FROM SCRATCH IN A GARDEN OF OVER 500 SQUARE METERS, INCLUDING LAMP-POST AND TOWN SQUARE.

QUESTIONS?
info@abelgianvillage.com

dift.be
snapchat:DIFTbe

#ABelgianVillage

COME AND VISIT US

APRIL 14–19
VIA (PRIVATA GIOVANNI) VENTURA 12, MILAN
ABELGIANVILLAGE.COM

A Belgian Village by DIFT

ATELIER BELGE

atelierbelge.eu
info@atelierbelge.eu

ALTON

alton.be
info@alton.be

SERAX

serax.com
stephanie@serax.com

FRAGMENTURE

fragmenture.be
hello@fragmenture.be

**GIEL DEDEURWAERDER &
SEBASTIEN TALPE**

gieldeeurwaerder.be & bastalpe.be
giel@fordesign.be

**LIVABLE PRODUCTS
by SEP VERBOOM**

livableproducts.org
sep@boomin.be

ILSE BRUGGEMANS

indetail.be
info@indetail.be

ZANGRA

zangra.com
eve@zangra.com

QUITCH

—
wim.quidousse@skynet.be

STUDIO WOOT WOOT

studiwootwoot.be
info@studiwootwoot.com

STUDIOMIE

studiomie.be
mieke@studiomie.be

FIVE AM

fiveam.be
question@fiveam.be

FILIP JANSSENS

filipjanssens.be
filip-janssens@hotmail.com

DE INVASIE

deinvasie.be
robot@deinvasie.be

VOMO

Represented by
JONAS VAN PUT

jonasvanput.be & vomo.be
bart@baccarne.be

AXELLE VERTOMMEN

CLOUDSWIMMERS
cloudswimmers.com

DAVID HOPPENBROUWERS
davidhoppenbrouwers.com

EMMA DE KIMPE
emmadekimpe.tumblr.com

ESTHER VAN SCHUYLENBERGH
esthervanschuylenbergh.be

FILIP JANSSENS
filipjanssens.be

GOBO LIGHTING
gobo.bigcartel.com

GOELE MAES
goelemaes.blogspot.com

HOUTENMEUBEL
houtenmeubel.be

INTERROR
interror.be

JAN GEBOERS
jangeboers.be

JONAS VAN PUT
jonasvanput.be

MARTHE VANTHUYNE
marthevanthuyne.be

MVOS
mvos.nl

NICOLE BROCK
nicolebrock.be

PIERRE-EMMANUEL VANDEPUTTE
pierreemmanuelvandeputte.com

RIA LINS
ria-lins.be

STUDIO VOSK
studiovosk.com

YKOON
ykoondesign.be

ZAAG.
roa-peirlinck.be

**DESIGN MUSEUM
GENT support by
BUDALAB**

designmuseumgent.be
info@designmuseumgent.be

TOGETHER WITH DE INVASIE DESIGN MUSEUM GENT PRESENTS: DE INVASIE TOONT, AN EXHIBITION SHOWCASING THE BEST OF EMERGING BELGIAN TALENT AND THEIR BELGIAN INSPIRATION. THE EXHIBITION SHOWS WORKS FROM DIFFERENT DISCIPLINES IN A SURPRISING SETTING AT THE ONLY DESIGN MUSEUM IN BELGIUM.
DE INVASIE TOONT : MAY 8 – SEPTEMBER 12 2015.